



Fitting Instructions

TOWBAR C28AR
For CITROEN C5 HATCH
(April 2001/October 2004)

MATERIALS

A	1	Towbar Mainframe
E	1	Left Sidearm
F	1	Right Sidearm
G	4	M10 x 1.5 x 40mm Bolts, Lock Washers and Large Flat Washers (30mm O.D)
H	5	M12 x 1.75 x 35mm Bolts, Nuts and Lock Washers
J	2	M12 x 1.75 x 90mm Bolts and Nyloc Nuts
M	1	Electrical Plate (SEP-M)
ZR	1	Detachable Neck Kit (ZR2H000)

FITTING

1. Remove nut holding central bumper tag to spare wheel pan. Remove underskirt (one screw each end). Remove exhaust rubber from welded-on exhaust hanger (with the aid of WD40). Disconnect reversing sensors if fitted (squeeze the top and bottom of the sensor connector and pull off), disconnect sensor wiring loom from the two clips. Remove plastic moulding located on inside of bumper (below vehicle towing hitch).
2. Loosely attach Right Sidearm (F) and Left Sidearm (E) to chassis rails using Bolts (G).
3. Loosely attach Towbar Mainframe (A) to Side arms (E and F) using Bolts (H), **tighten all Bolts.**
4. Attach Detachable Neck Kit (ZR) and Electrical Plate (M) to Cross Bar (A) using Bolts (J) as per separate instructions. **Fully tighten forward Bolt (J) only.** Note: The towball height can be varied by approximately 25mm depending on how far the Mainframe (A) and Neck are pushed upwards when tightening bolts.
5. Attach exhaust rubber, reconnect reversing sensors and wiring loom, attach plastic moulding.
6. The underskirt may be left off the vehicle and **returned to the customer.** If so, attach Electrical Plate (M) and **tighten remaining Bolt (J).**

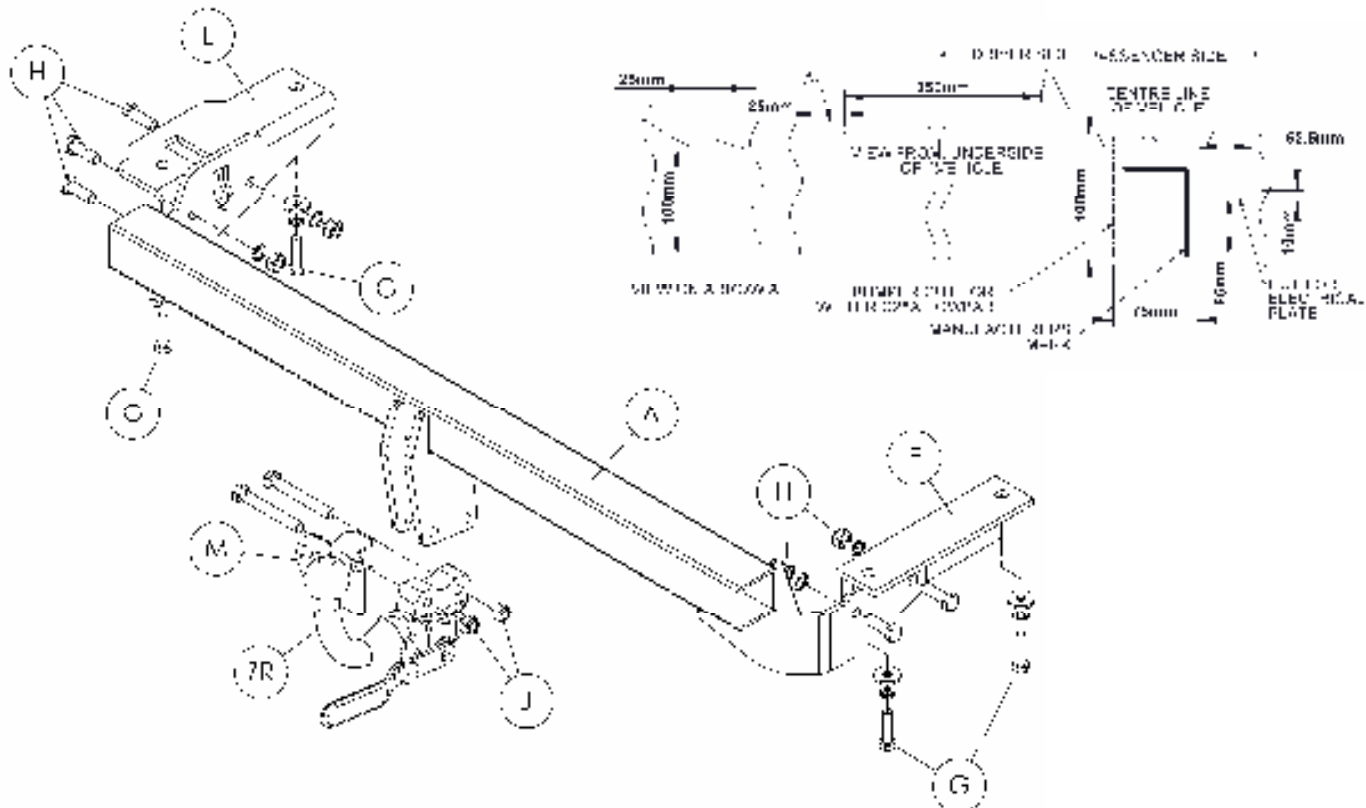
If the underskirt is refitted, offer up to vehicle to verify the cut positions, and cut as shown below. Fit Electrical Plate (M) and **tighten remaining Bolt (J).**

Note: The flanged towball will trigger the reversing sensors (if fitted), fitting of the Witter Removable Towball Unit (Part number ZR2H000) will cure this problem.

Note: This towbar must be used with either a Witter Towball (part number Z1) or Class A50-1 or A50-X towball dimensionally Conforming to A50-1 with a 'D' and 'S' value greater than or equal to that of the towbar.

Please refer to the vehicle specification for the trailer weight and nose limits, which **must be observed.**

Recommended torque settings: M8 - 27Nm, M10 - 53 Nm, M12 - 95 Nm, M14 - 150 Nm, M16 - 214 Nm



Fitting Instructions

Detachable Towball System

ZR2

MATERIALS

A Towball Receptor Unit



B Handle



C Towball Neck



P Safety Chain Plate



W Weather Cover

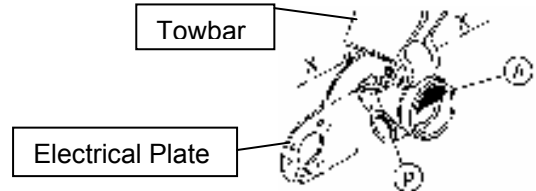


S Towball Neck Bag

2 M12 x 75mm x 1.75 Bolts + Nylocs

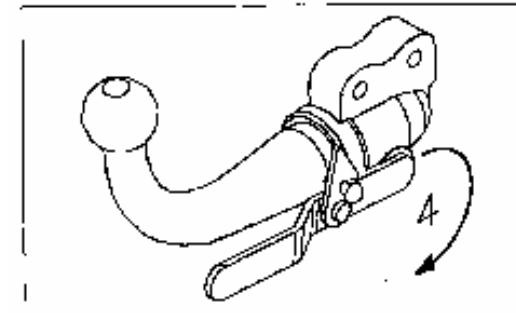
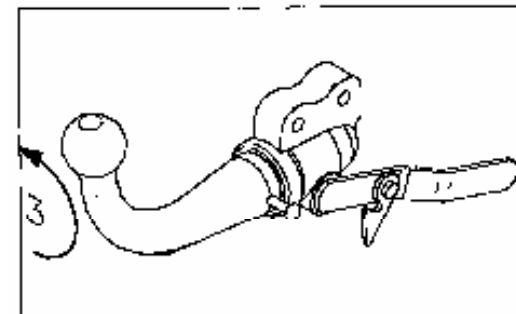
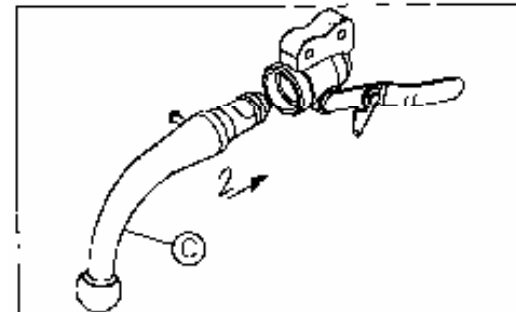
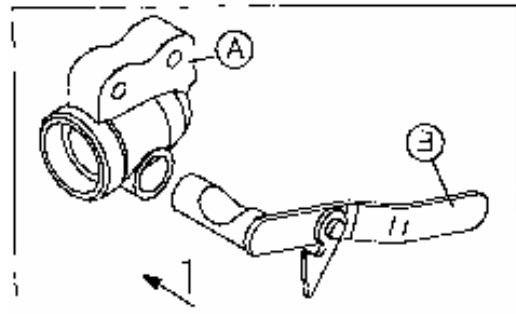
FITTING OF TOWBALL RECEPTOR

1. Remove original bolts at (X) and Towbar Centre Part (If fitted).
2. Attach Towball Receptor Unit (A), Safety Chain Plate (P) and original Electrical Plate if removed, to Towbar Centre Plates using replacement Bolts and Nyloc Nuts.
3. Tighten Bolts to 96 Nm.



DETACHABLE OPERATION

1. Slide Handle (B) into Towball Receptor Unit (A) and keep orientated as shown.
2. Slide Towball Neck (C) into Towball Receptor Unit (A).
3. Rotate Towball Neck (C) anti-clockwise 180°.
4. Rotate Handle (B) clockwise until Spring Loaded Lock clips into position as shown.



REMOVAL OF TOWBALL

Removal is a reverse of the above procedure. Place Handle (B) and Towball Neck (C) in bag provided. After removing Towball Neck (C) fit Weather Cover (W) to Towball Receptor Unit (A).