



Fitting Instructions

TOWBAR C35Q
For Citroen C5 Estate
(2001 and 2004 Models)

MATERIALS

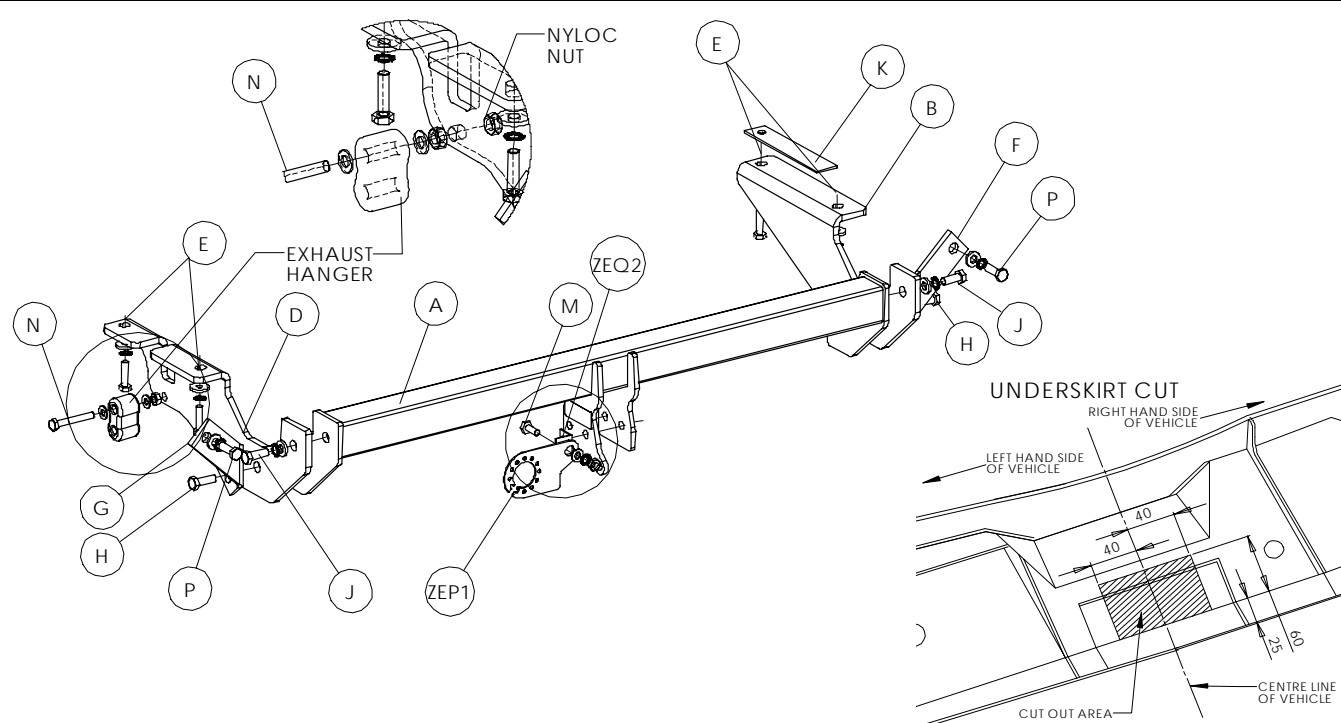
A	1	Cross Bar with European facing to 94/20/EC A50-1
B	1	Right Hand Side arm
D	1	Left Hand Side arm
E	4	M10x40x1.5mm Bolt, Lock Washer, Flat Washer (30mm)
F	1	Right Hand Bracket (Only used on New models, late 2004 onwards)
G	1	Left Hand Bracket (Only used on New models, late 2004 onwards)
H	2	M12x50x1.75mm Bolt, Lock Washer, Nut, x4 Flat Washers (30mm)
J	2	M12x40x1.75mm Bolt, Lock Washer, Flat Washers (30mm)
K	1	Spacer Plate
M	1	M10x25x1.5mm Bolt, Lock Washer, Nut and x2 Flat Washers (20mm)
N	1	M12x80x1.75mm Bolt, Nut, x2 Flat Washers (25mm) and Nyloc Nut
P	2	M10x40x1.5mm Bolt, Lock Washers and Flat Washers (30mm)
ZQ	1	Quantum Detachable Kit (ZQ2032)
ZEP1	1	Electrical Plate
ZEQ2	1	Electrical Bracket

FITTING

1. Remove the underskirt (4 screws under rear valance, 1 screw forward of exhaust hanger). Remove exhaust rubber from the chassis hanger.
2. Attach Right Sidearm (**B**) and Spacer Plate (**K**) using fixings (**E**), and the Left Sidearm (**D**) to chassis rails using fixings (**E**).
3. Loosely attach Cross Bar (**A**) to Side arms (**B and D**) using Fixings (**H and J**). **Note:** On face lifted models only (2004 onwards), attach Brackets (**G and F**) to the crossbar and chassis using fixings (**H and P**). When fitting brackets (**G and F**), ensure the shortest side of the brackets are facing towards the front of the vehicle.
4. Relocate and lower the exhaust rubber using fixing (**N**) through the lowest hole in the Side Arm (**D**), as illustrated below.
5. Attach detachable neck (**ZQ**) and Electrical Plate Bracket (**ZEQ2**) following the additionally provided instructions. Attach Electrical plate (**ZEP1**) to the Electrical Bracket using fixing (**M**).
6. Ensure the towball is horizontal and fully tighten all remaining fixings to the recommended torque setting. The towball height can be varied by approximately 25mm depending on how far the Cross bar (**A**) and Neck (**ZQ**) are pushed upwards when tightening bolts.
7. The underskirt may be left off the vehicle and **returned to the customer**. If the underskirt is refitted, offer up to vehicle to verify the cut positions, and cut the central hole as shown below also and create narrow slits to allow side arms to protrude.

Note: This towbar must be used with either a Witter Towball (part number Z11) or Class A50-1 or A50-X towball dimensionally conforming to A50-1 with a 'D' and 'S' value greater than or equal to that of the towbar. Please refer to the vehicle specification for the trailer weight and nose limits, which **must be observed**.

Recommended torque settings: M8 - 27Nm, M10 - 53 Nm, M12 - 95 Nm (Grade 10.9-139Nm), M14 - 150 Nm, M16 - 214 Nm





Fitting Instructions

QUANTUM DETACHABLE
TOWBALL SYSTEM
(ZQ XXXX)

MATERIALS

A	1	Receptor/Socket for Towball
T	1	Detachable Towball
K	2	Keys for Detachable Towball
X	4	M12 x 25 x 1.75mm Bolts, Spring Washers and Flat Spacer Washers (25mm O.D)
FC	1	Fixed Weather Cover
RC	1	Removable Weather Cover
L	1	Centreline Label
B	1	Bag
ZQM1	1	Operation Manual

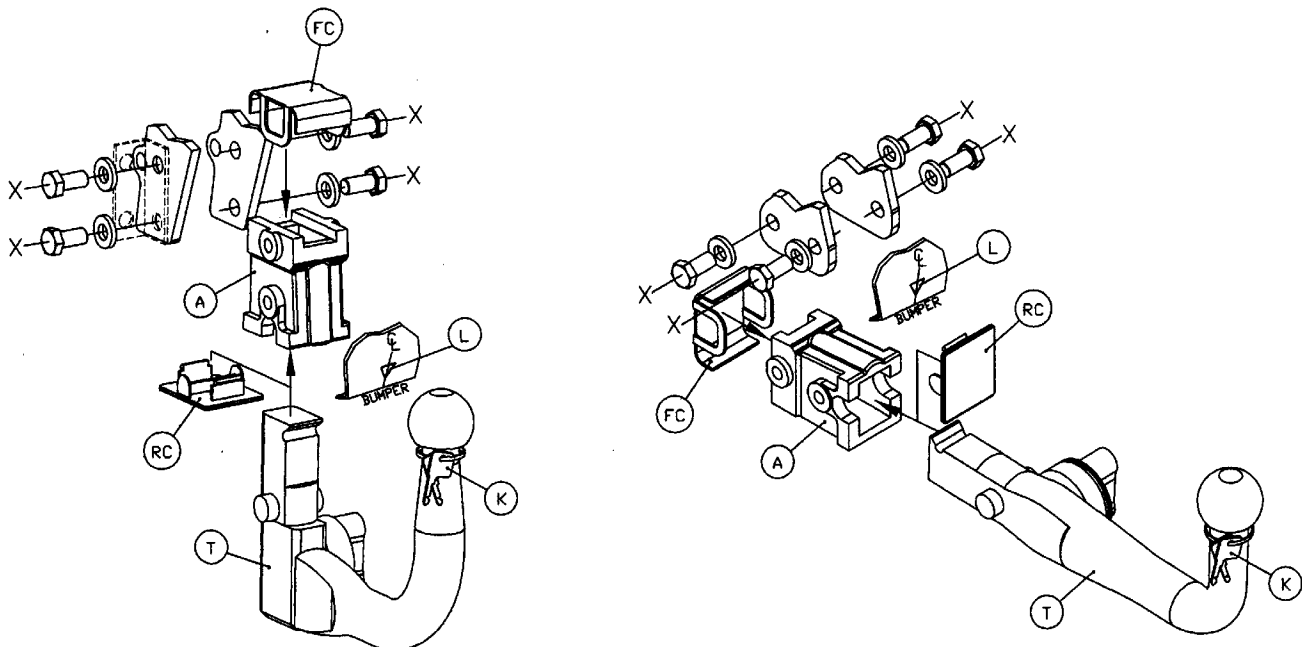
INSTALLATION PROCEDURE

1. Place black plastic fixed weather cap (FC) over forward/ (horizontal system) / upper (vertical system) holes of receptor/socket (A), insert receptor/socket (A) into gap between mounting plates on the towbar, and loosely attach using bolts (X).
 - Notes: (ZEQ1), which is provided as part of the towbar should be refitted on left hand side, together with the electrical socket mounting plate (ZEP1). Only use the 25mm O.D Flat Spacer Washers (X) where there are no loose components attached, i.e. ZEQ1 (electrical socket mounting plate bracket, shown in dashed linetype below).
2. Insert detachable towball unit (T), using procedure detailed in Operation Manual provided, and ensure correct vertical alignment of the towball before fully tightening bolts (X).
3. Attach centreline label (L) to lower edge of bumper.
4. Remove keys (K) from neck of towball, and record the key number in the Operation Manual, together with the fitters name, telephone number, date fitted, vehicle model and registration number and towbar part number.

Bumper Cut – It may be necessary to trim the bumper to allow adequate clearance around the operation handle on the right hand side.

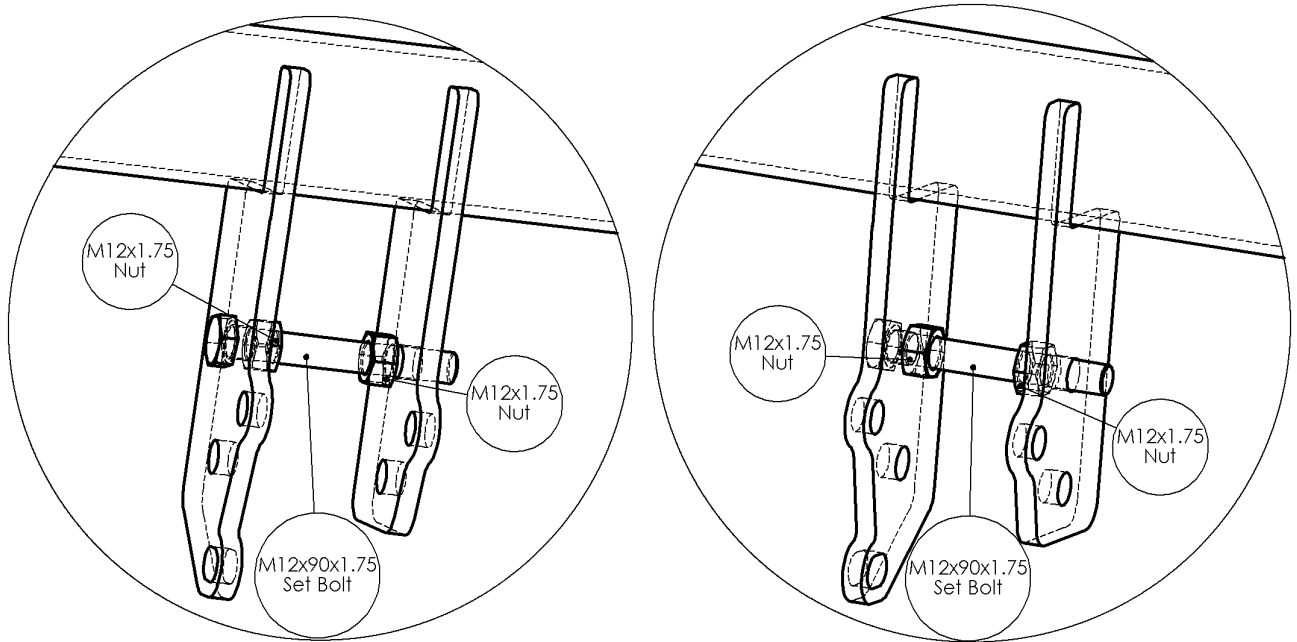
Note: It is essential that the customer/end user is familiar with the operation of the towball system, as detailed in the operation manual, which must be handed to the customer/end user.

Recommended torque settings: M12 - 95 Nm



Important – It is essential to ensure that the Operation Manual is in the possession of the end user.

Splaying Centre Profile Shapes



It may be necessary to splay the centre profile shapes further apart in order to fit the centre components of the towbar between them:

- Insert the M12x90x1.75 Set Bolt through one of the profile plates, through the hole nearest the main crossbar.
- Thread both M12x1.75 nuts onto the Set Bolt.
- Screw one of the nuts all the way on, until finger tight.
- Unscrew the other nut so that it splays the two profiles apart far enough to just fit the centre components of the towbar between them when the spreading bolt is removed, (i.e. some allowance will need to be made for “springback” of the steel).