



Fitting Instructions

TOWBAR C36Q
For Citroen C4 Sedan & Coupe

MATERIALS

A	1	Cross Bar
B	1	Bracket
C	4	Spacer
D	1	Bracket
E	1	Electrical Plate Bracket (ZEQ1)
F	1	Electrical Plate (ZEP1)
G	4	M10 Nuts, Lock Washers and Flat Washers (25mm O.D.)
H	4	M8 x 50 x 1.25 pitch bolts, Lock Washers, 5 Flat Washers (20mm O.D.) and 1 M8 Nut
J	4	M10 x 30 x 1.5 pitch bolts, Nuts, Lock Washers
K	1	M12 x 25 x 1.75 pitch bolt, Nut, Lock Washer, Flat Washer
ZQ	1	Quantum Detachable Neck (ZQ3012) See separate fitting instruction.

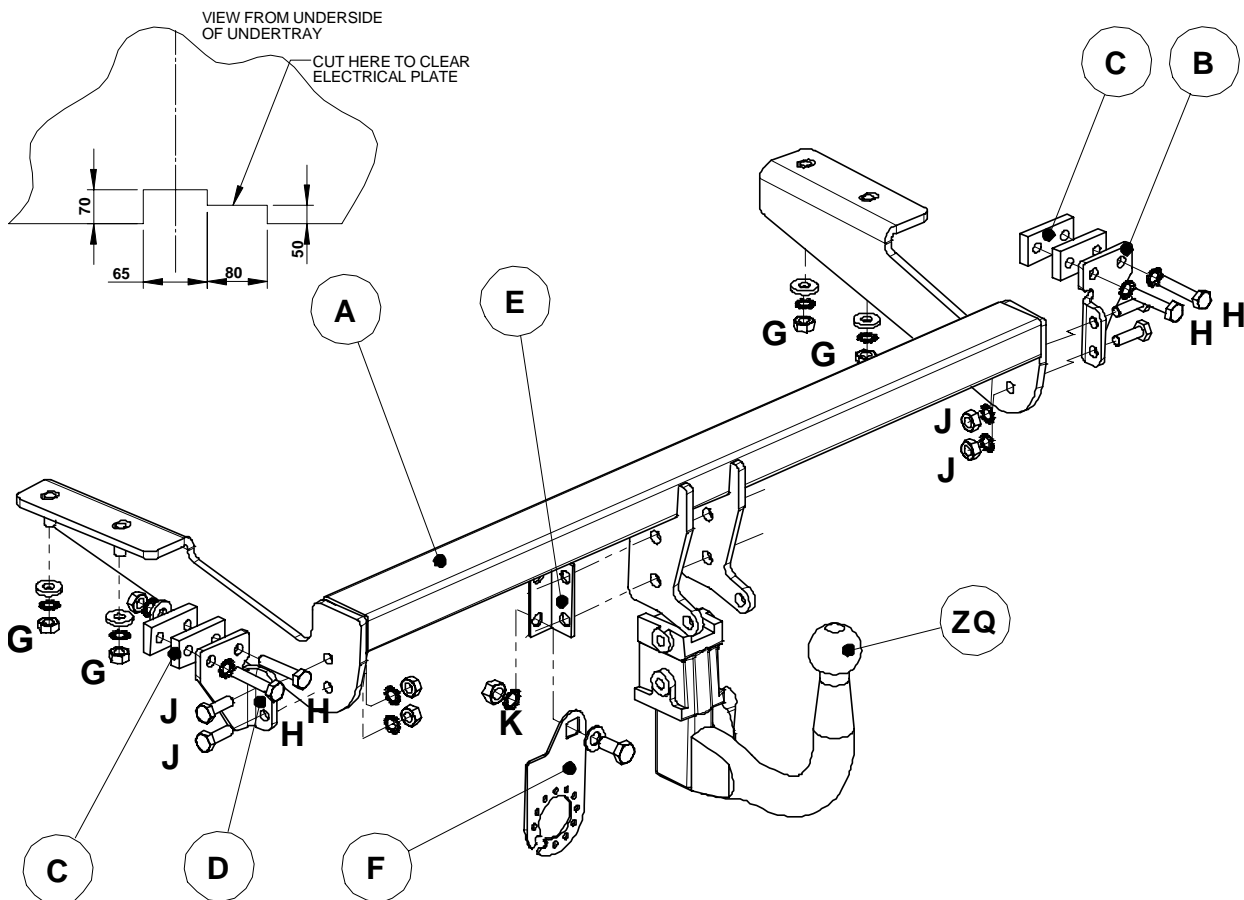
FITTING

1. Remove bumper, and under tray on Coupe (1 tip screw each side, 2 plastic clips securing bottom edge, pull ends out and rearwards).
2. Remove bottom four M10 bolts securing each end of the bumper beam to the vehicle. (2 bolts each end)
3. Remove towing eyes from each chassis rail and lower exhaust silencer by detaching supporting rubbers.
4. Locate crossbar (A) over towing eye mounting studs on each chassis rail and secure using fasteners (G)
5. Assemble Spacers (C) and Brackets (B and D) over lower holes in bumper beam using fasteners (H)
6. Secure Brackets (B and D) to Crossbar (A) using fasteners (J). **Fully tighten all bolts.**
7. Assemble Quantum Detachable (ZQ), Spacers (M), and Bracket (E) to Crossbar (A) using fitting instructions on separate sheet.
8. Secure Electrical Plate (F) to Bracket (E) using fasteners (K). **Fully tighten all bolts.**
9. If the vehicle is a coupe, cut under tray as shown below, and refit to vehicle.
10. Refit bumper

Note: This towbar must be used with either a Witter Towball (part number ZQ3012) or Class A50-1 or A50-X towball dimensionally conforming to A50-1 with a 'D' and 'S' value greater than or equal to that of the towbar. (See alternatives C36 and C36S)
Please refer to the vehicle specification for the trailer weight and nose limits, which **must be observed**.

Recommended torque settings: M8 - 27Nm, M10 - 53 Nm, M12 - 95 Nm, M14 - 150 Nm, M16 - 214 Nm

M12 Grade 10.9 - 139Nm





Fitting Instructions

QUANTUM DETACHABLE TOWBALL SYSTEM (ZQ XXXX)

MATERIALS

A	1	Receptor/Socket for Towball
T	1	Detachable Towball
K	2	Keys for Detachable Towball
X	4	M12 x 25 x 1.75mm Bolts, Spring Washers and Flat Spacer Washers (25mm O.D)
FC	1	Fixed Weather Cover
RC	1	Removable Weather Cover
L	1	Centreline Label
B	1	Bag
ZQM1	1	Operation Manual

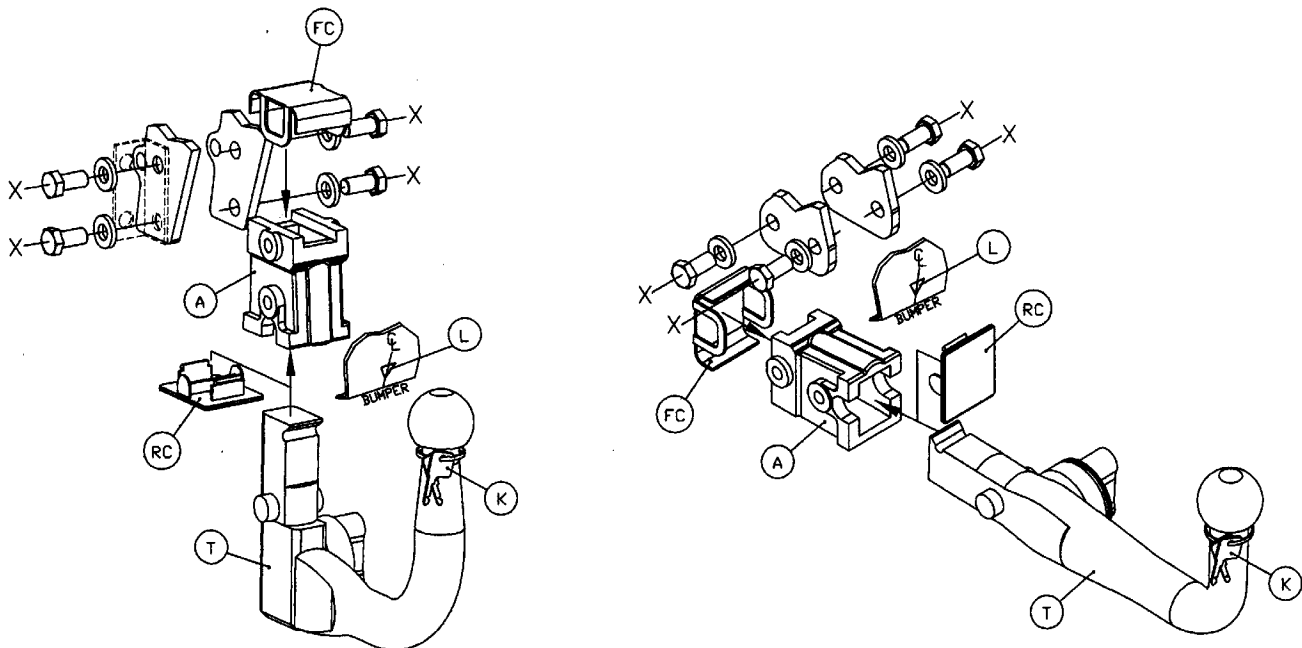
INSTALLATION PROCEDURE

- Place black plastic fixed weather cap (FC) over forward/ (horizontal system) / upper (vertical system) holes of receptor/socket (A), insert receptor/socket (A) into gap between mounting plates on the towbar, and loosely attach using bolts (X).
 - Notes: (ZEQ1), which is provided as part of the towbar should be refitted on left hand side, together with the electrical socket mounting plate (ZEP1). Only use the 25mm O.D Flat Spacer Washers (X) where there are no loose components attached, i.e. ZEQ1 (electrical socket mounting plate bracket, shown in dashed linetype below).
- Insert detachable towball unit (T), using procedure detailed in Operation Manual provided, and ensure correct vertical alignment of the towball before fully tightening bolts (X).
- Attach centreline label (L) to lower edge of bumper.
- Remove keys (K) from neck of towball, and record the key number in the Operation Manual, together with the fitters name, telephone number, date fitted, vehicle model and registration number and towbar part number.

Bumper Cut – It may be necessary to trim the bumper to allow adequate clearance around the operation handle on the right hand side.

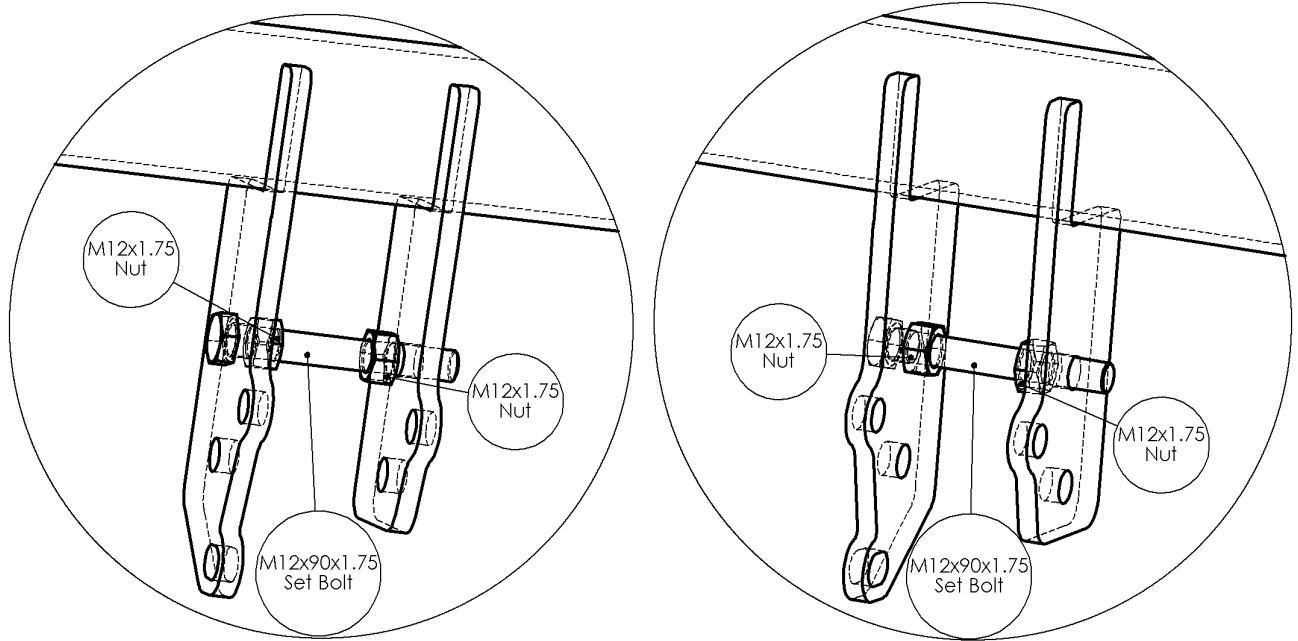
Note: It is essential that the customer/end user is familiar with the operation of the towball system, as detailed in the operation manual, which must be handed to the customer/end user.

Recommended torque settings: M12 - 95 Nm



Important – It is essential to ensure that the Operation Manual is in the possession of the end user.

Splying Centre Profile Shapes



It may be necessary to splay the centre profile shapes further apart in order to fit the centre components of the towbar between them:

- Insert the M12x90x1.75 Set Bolt through one of the profile plates, through the hole nearest the main crossbar.
- Thread both M12x1.75 nuts onto the Set Bolt.
- Screw one of the nuts all the way on, until finger tight.
- Unscrew the other nut so that it splays the two profiles apart far enough to just fit the centre components of the towbar between them when the spreading bolt is removed, (i.e. some allowance will need to be made for “springback” of the steel).