



# Fitting Instructions

DETACHABLE TOWBAR SK14Q  
For Audi A3 Sportback (not with colour coded bumper)  
Skoda Octavia Hatch  
2004-

## MATERIALS

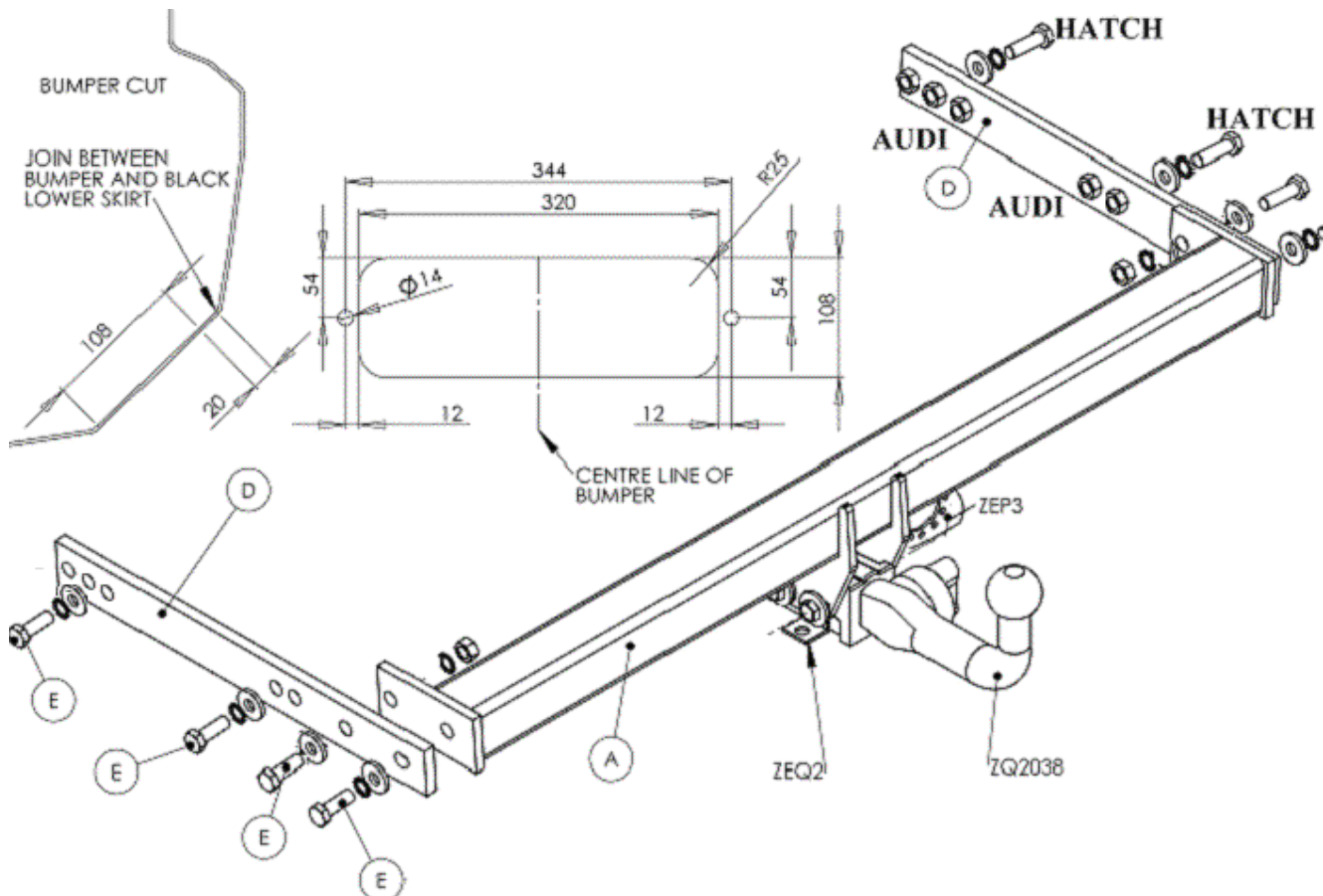
A	1	Cross Bar
ZQ	1	ZQ2038 Detachable Kit
D	2	Sidearms
E	8	M12 x 40 x 1.75 Bolts, 2 Nuts, Lock Washers and Flat Washers (30mm O.D)
H	1	Bumper insert kit
ZEP3	1	Electrical plate with Type Label
ZEQ2	1	Safety Chain Bracket

## FITTING

1. Remove bumper, 6 Torq head screws in each wheel arch, 1 Torq head screw in each lower corner of bumper, 4 screws along lower edge of bumper and 1 screw under each light cluster, 2 bolts behind side trim. Remove crash beam and hand to end user for refitment when bar is removed. **Refit bolts to rear panel to prevent ingress of water**
2. Insert sidearms (D) into chassis rails and loosely attach using fixings (E) with flat washers.
3. Attach main bar (A) using remaining fixings (E). Ensure main bar (A) is square and as close to rear panel as possible  
**(Fully Tighten all Bolts)**
4. Fit Detachable Kit ZQ- Please refer to ZQ fitting instruction.
5. Cut bumper as shown and refit bumper.

Please refer to the vehicle specification for the trailer weight and nose limits, which **must be observed**.

**Recommended torque settings:** M8 - 27Nm, M10 - 53 Nm, M12 - 95 Nm, M16 - 214 Nm





# Fitting Instructions

QUANTUM DETACHABLE  
TOWBALL SYSTEM  
(ZQ XXXX)

## MATERIALS

A	1	Receptor/Socket for Towball
T	1	Detachable Towball
K	2	Keys for Detachable Towball
X	4	M12 x 25 x 1.75mm Bolts, Spring Washers and Flat Spacer Washers (25mm O.D)
FC	1	Fixed Weather Cover
RC	1	Removable Weather Cover
L	1	Centreline Label
B	1	Bag
ZQM1	1	Operation Manual

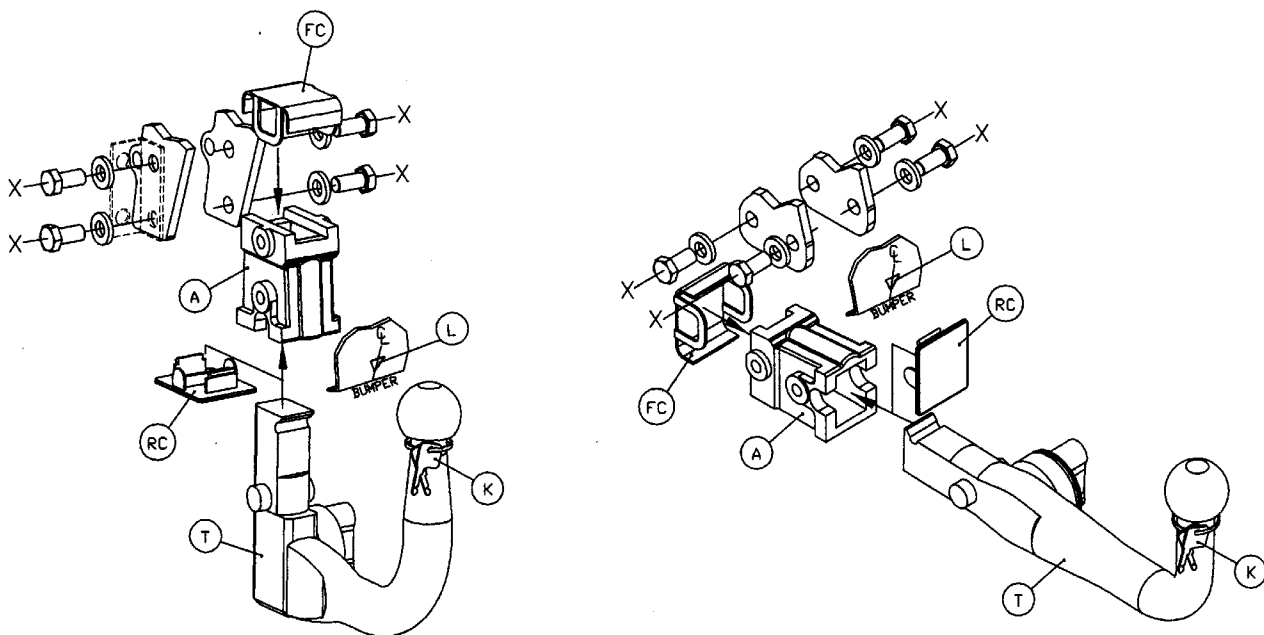
## INSTALLATION PROCEDURE

1. Place black plastic fixed weather cap (FC) over forward/ (horizontal system) / upper (vertical system) holes of receptor/socket (A), insert receptor/socket (A) into gap between mounting plates on the towbar, and loosely attach using bolts (X).
  - Notes: (ZEQ1), which is provided as part of the towbar should be refitted on left hand side, together with the electrical socket mounting plate (ZEP1). Only use the 25mm O.D Flat Spacer Washers (X) where there are no loose components attached, i.e. ZEQ1 (electrical socket mounting plate bracket, shown in dashed linetype below).
2. Insert detachable towball unit (T), using procedure detailed in Operation Manual provided, and ensure correct vertical alignment of the towball before fully tightening bolts (X).
3. Attach centreline label (L) to lower edge of bumper.
4. Remove keys (K) from neck of towball, and record the key number in the Operation Manual, together with the fitters name, telephone number, date fitted, vehicle model and registration number and towbar part number.

**Bumper Cut – It may be necessary to trim the bumper to allow adequate clearance around the operation handle on the right hand side.**

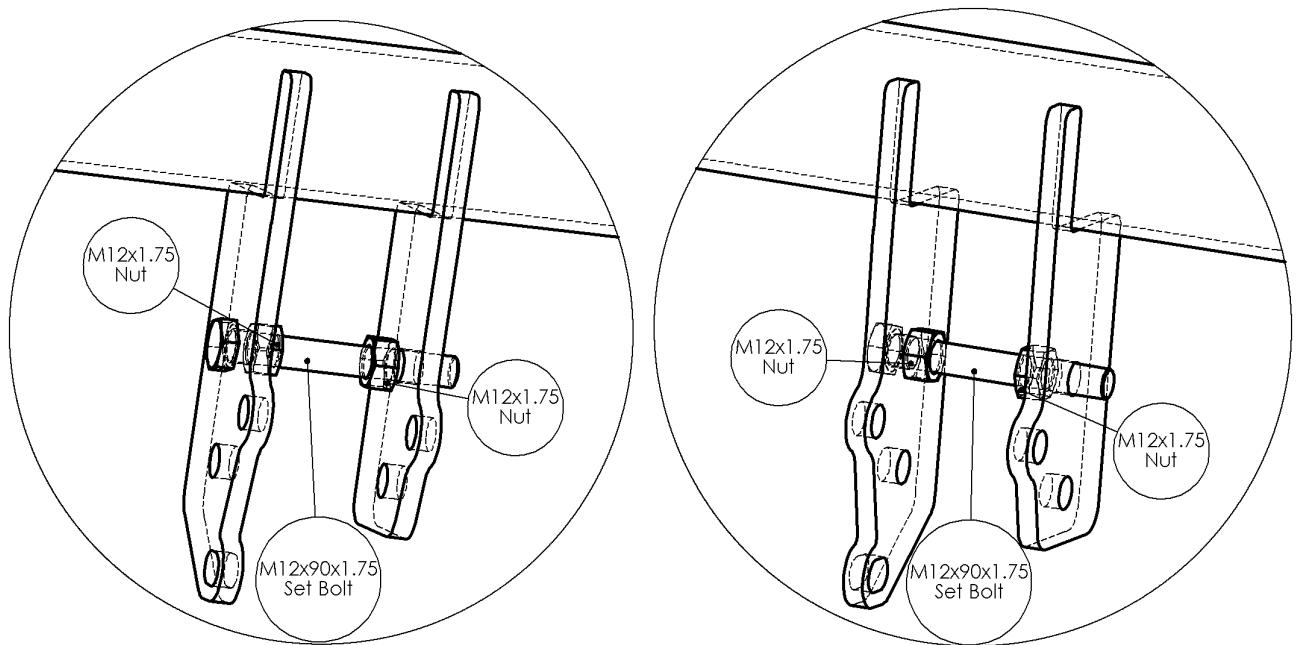
**Note:** It is essential that the customer/end user is familiar with the operation of the towball system, as detailed in the operation manual, which must be handed to the customer/end user.

**Recommended torque settings:** M12 - 95 Nm



Important – It is essential to ensure that the Operation Manual is in the possession of the end user.

## Splaying Centre Profile Shapes



It may be necessary to splay the centre profile shapes further apart in order to fit the centre components of the towbar between them:

- Insert the M12x90x1.75 Set Bolt through one of the profile plates, through the hole nearest the main crossbar.
- Thread both M12x1.75 nuts onto the Set Bolt.
- Screw one of the nuts all the way on, until finger tight.
- Unscrew the other nut so that it splays the two profiles apart far enough to just fit the centre components of the towbar between them when the spreading bolt is removed, (i.e. some allowance will need to be made for “springback” of the steel).